



# GARNTeg PRIMARY SCHOOL

Hillcrest Garndiffaith Pontypool Torfaen NP4

7SJ

01495 742934

[Garntegschool.office@torfaen.gov.uk](mailto:Garntegschool.office@torfaen.gov.uk)

[www.garntegprimary.co.uk](http://www.garntegprimary.co.uk)



Newsletter - 01<sup>st</sup> May 2026

Cylchlythyr - 01<sup>st</sup> Mai 2026

Value for this half term is



Gwerth yr hanner tymor

Croeso Yn Ôl

INSET DAYS

Friday 17th July 2026

Monday 20<sup>th</sup> July 2026

## May

Monday 11<sup>th</sup> - 13<sup>th</sup> May 2026 - Year 6 Residential Trip

Tuesday 12<sup>th</sup> May 2026 - Pupil Class Photos

Tuesday 19<sup>th</sup> May 2026 - Dance Festival Cwmbran Congress Theatre at 6pm

Wednesday 20<sup>th</sup> May 2026 - Year 6 Class Photos

## Term Dates - 2025/2026 Academic Year

| Term   | Term Begins        | Half Term Begins   | Half Term Ends     | Term Ends          |
|--------|--------------------|--------------------|--------------------|--------------------|
| Autumn | Monday<br>01.09.25 | Monday<br>27.10.25 | Friday<br>31.10.25 | Friday<br>19.12.25 |
| Spring | Monday<br>05.01.26 | Monday<br>16.02.26 | Friday<br>20.02.26 | Friday<br>27.03.26 |
| Summer | Monday<br>13.04.26 | Monday<br>25.05.26 | Friday<br>29.05.26 | Monday<br>20.07.26 |

## Late Arrivals

If pupils arrive at 9:00am and after, please can all Parents & Carers (or whoever brings them to school) take them to the school office for their registration mark and lunch choice. Pupils need to be handed over to office staff. Can Parents & Carers please let other adults who bring children to school know this information too.

## Allotment Donations

We would be grateful for any plants or seeds for our allotment this Summer Term. Donations can be brought to the office. Thank you! 🌷 🌸 🌻

## Torfaen Dance Festival



This year's Torfaen Dance Festival will take place on **Tuesday 19th May 2026 at 6pm** at the Congress Theatre in Cwmbran. Selected pupils will be participating.

If you wish to attend the festival, tickets will be available to purchase from **Friday 1st May from 9am** online at <https://congresstheatre.co.uk/> or at the Congress Theatre for £6 each. Diolch!

### Appropriate Footwear 🦿

A reminder to ensure children are wearing appropriate footwear in school, closed toe shoes are necessary for daily mile and climbing frame activities.

**Torfaen Play & Short Breaks Service**  
 Providing a variety of fun and interactive sessions in the heart of the community.

# FOOD AND WELLBEING CAMP

**HALF TERM 2026**

Tuesday 26th May  
 Wednesday 27th May  
 Thursday 28th May  
 10:00am - 3:00pm  
 Age 5 to 11 years

**HOT LUNCH PROVIDED DAILY FREE OF CHARGE**

**FREE OF CHARGE**

**Garnteg Primary School**  
 Hillcrest, Garndiffaith,  
 Pontypool, NP4 7SJ

**Pre booking required**  
 Please use the QR code to pre book  
 For more information please contact:  
 torfaenplay@torfaen.gov.uk



  
 SUSTAINABLE FOOD PLACES  
 Torfaen SILVER

  
 FOOD FOR GROWTH  
 TORFAEN

  
 @chwaraetorfaentorfaenplay @torfaenplayservice

  
 Chwarae Torfaen Torfaen Play  
 torfaenplay@torfaen.gov.uk

  
 Partnership Community Councils  
 Cymdeithion Cymunedau Pwy-Pwy

[https://iweb.itouchvision.com/portal/f?p=gds:category\\_link:::::CUID,LANG:CCA8599AE222B64E553E3059431401AB98COB98E,EN&P\\_LANG=en](https://iweb.itouchvision.com/portal/f?p=gds:category_link:::::CUID,LANG:CCA8599AE222B64E553E3059431401AB98COB98E,EN&P_LANG=en)

** Community Support in School! **

Citizens Advice will be available in the school hall on **19<sup>th</sup> May 2026** from 2.00-4pm. Their family advice project is here to provide support, answers, and guidance. We hope to see you there!

# Brighter Futures Together South Wales

Citizens Advice Torfaen provide confidential and impartial advice on a range of areas including:

- Debt
- Benefits
- Housing
- Employment
- Family

Working in partnership with local schools, we are pleased to deliver a family advice project which sets out an aim to tackle child poverty through delivery of advice and support to parents/guardians at schools across the county.

**You can meet with our dedicated advisor at Garteg Primary School on the following dates:**

20/01/2026 02pm-04pm  
17/03/2026 02pm-04pm  
21/04/2026 02pm-04pm  
19/05/2026 02pm-04pm  
16/06/2026 02pm-04pm

Alternatively if you can't make it, give us a call:  
**01633 973570**  
WhatsApp  
**07562685212**



cyngor ar  
bopeth

citizens  
advice

Torfaen

## Abersychan School Moving Up Day



# MOVING UP DAY

Ysgol Abersychan School

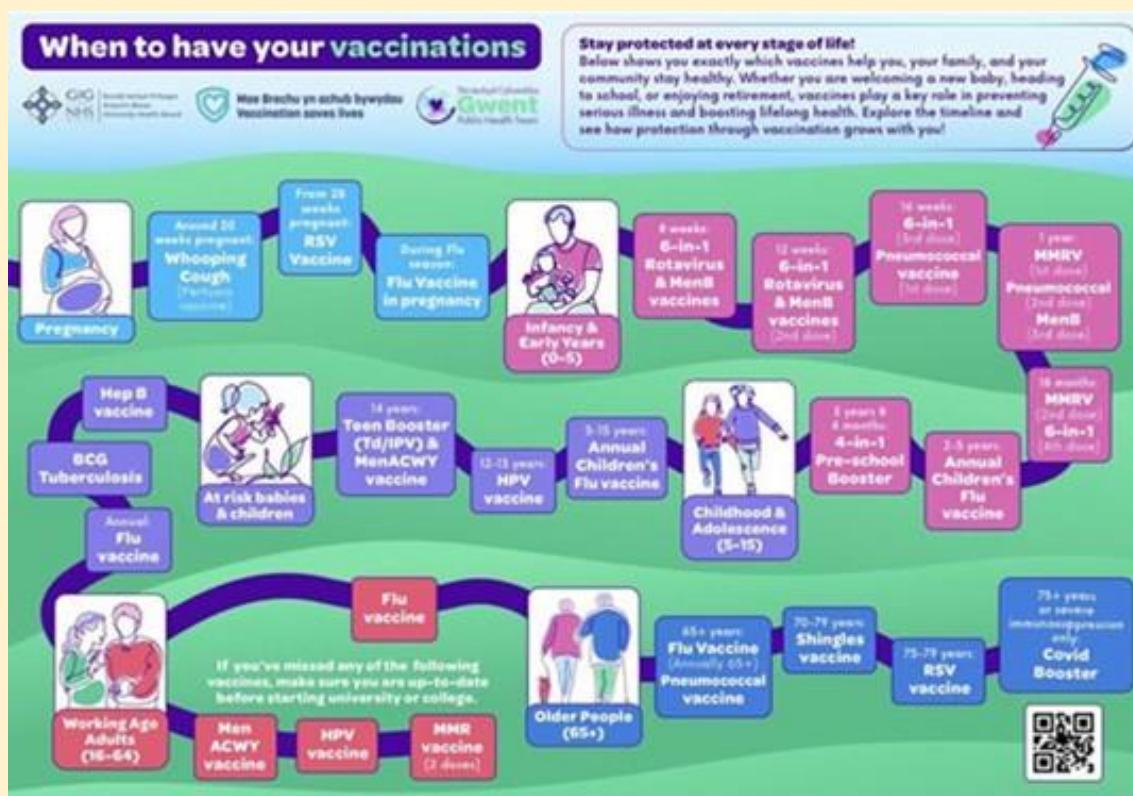
## Wednesday 1<sup>st</sup> July

We are looking forward to welcoming our new starters to Abersychan School on Wednesday 1<sup>st</sup> July!

- ✓ MEET THE TEACHERS
- ✓ TOUR THE SCHOOL
- ✓ EXPERIENCE LESSONS

✉ [school.office@abersychanschool.co.uk](mailto:school.office@abersychanschool.co.uk)  
🌐 [www.abersychanschool.org.uk](http://www.abersychanschool.org.uk)

## Vaccination Information



Director of Public Health, Professor Tracy Daszkiewicz, is urging parents and carers to make sure children and teenagers are protected against meningitis, following recent tragic cases in Kent

Meningitis can develop very quickly and can be life-threatening. Vaccination is the best way to prevent it.

Key meningitis protection includes:

- MenB for babies and young children
- Pneumococcal vaccine (can also prevent meningitis)
- MenACWY for Year 9 pupils and young people under 25 starting university

**Young children, teenagers and students in shared accommodation are at the highest risk.**

- Check your child's vaccination record by contacting your GP or our Vaccination Service: 0300 303 1373
- Book any missed doses
- Learn the symptoms and seek urgent help if concerned

"Vaccination saves lives," says Professor Daszkiewicz- please take up your vaccinations.

More information: ["Check Your Children's Vaccination Status" -Gwent Director of Public Health Urges Parents, following Meningitis news in the UK - Aneurin Bevan University Health Board](#)

The ABUHB School Nursing Service  
Parent/CarerLine



The ABUHB School Nursing Service are excited to launch Parent/CarerLine, a new SMS text service for parents and carers of children aged 5 to 16!

Parents and carers can text our school nurses on [07507330206](tel:07507330206) for expert advice and support with a child's health and wellbeing. \* Texts are replied to Monday - Friday 9:00 - 16:00 (excluding bank holidays)

**Who are School Nurses?**

School nurses are specially trained public health nurses who can help with a range of physical and emotional health issues, such as emotional wellbeing, toileting, immunisations, low mood, exam stress, self-harm, behaviour, relationships, healthy eating and more.

# Noddfa Church



## FREE TUITION GET AHEAD

Key Stage 2-4

**MONDAYS 4-6PM**  
A drink and a snack when you arrive

**LEARNING MADE FUN**  
Interactive sessions to help make learning fun. Games and Quizzes that will help you in every subject across the curriculum

**HOMEWORK HELP**  
Come with questions and we can help you to answer them for yourself.

**QUALIFIED TEACHERS**  
Volunteers from Noddfa Church with experience in teaching are giving up their time to offer free tuition.

www.NoddfaChurch.com  
(Homeschoolers welcome)



LEARN  
LOVE  
SHARE

## NODDFA JUNIORS

**FRIDAYS 6-8PM**  
TERM-TIME

**FOR PRIMARY SCHOOL  
AGED CHILDREN**

MAKE NEW FRIENDS  
EXPLORE CHRISTIANITY  
ASK QUESTIONS

Team **AWARDS** Individual **PRIZES** Cost **FREE**

**Activities**

- ✓ Storytelling & Crafts
- ✓ Games and Singing
- ✓ Tuck Shop
- ✓ Pizza and snacks
- ✓ Seasonal trips

**Noddfa Church**  
Abersychan  
NP4 7EF

**All are welcome**  
You do not need to be a "Christian" to come.

More Information [www.NoddfaChurch.com](http://www.NoddfaChurch.com)



# A allai fod yn sepsis?

Mae sepsis yn gyflwr sy'n peryglu bywyd. Gorymateb y system imiwnedd i haint neu anaf.

## Symptomau plant

- Byddant yn anadlu'n gyflym iawn
- Byddant yn cael 'ffit'
- Yw eu croen yn edrych yn frith, yn las, neu os byddant yn edrych yn welw iawn
- Oes ganddynt frech nad yw'n pylu pan fyddwch chi'n rhoi pwysau arno
- Byddant yn swrth iawn neu'n anodd eu deffro
- Byddant yn teimlo'n anarferol o oer pan fyddwch yn eu cyffwrdd

## Symptomau oedolion

Lleferydd aneglur neu ddryswch  
Cryndod eithafol neu boen yn y cyhyrau  
Pasio dim wrin (mewn diwrnod)  
Diffyg anadl difrifol  
Teimlo eich bod chi am farw  
Croen brith neu liw anarferol

Gall newidiadau i liw ymddangos mewn mannau â phigmentau goleuach, megis y tu mewn i fraich neu gledrau'r llaw, mewn pobl sydd â chroen tywyllach.

## Amau sepsis?

Ceisiwch gymorth meddygol ar frys.

**Ffonlwch 999** neu ewch i'r **Adran Achoslon Brys yn Ysbyty Athrofaol y Faenor.**

Os ydych yn poeni am haint ond nad ydych yn amau sepsis, ffoniwch 111.



Sganiwch y cod QR i gael rhagor o wybodaeth.



To find out more, scan the QR code.

[b1pab.glg.cymru/sepsis](http://b1pab.glg.cymru/sepsis) [sepsistrust.org](http://sepsistrust.org) [abuhb.nhs.wales/sepsis](http://abuhb.nhs.wales/sepsis)

# Could it be sepsis?

Sepsis is a **life-threatening** condition. It is the immune system's overreaction to an infection or injury.

## Child symptoms

- Are breathing very fast
- Have a 'fit' or convulsion
- Look mottled, bluish, or very pale
- Have a rash that does not fade when you press it
- Are very lethargic or difficult to wake
- Feel abnormally cold to touch

## Adult symptoms

Slurred speech or confusion  
Extreme shivering or muscle pain  
Passing no urine (in a day)  
Severe breathlessness  
It feels like you're going to die  
Skin mottled or discoloured

Darker pigmented skin may show colour changes in more lightly pigmented areas, like the inside of the forearm or palms.

## Suspect sepsis?

Seek medical help urgently.

**Call 999** or visit the **Emergency Department at The Grange University Hospital.**

If you're worried about an infection but don't suspect sepsis, call 111.

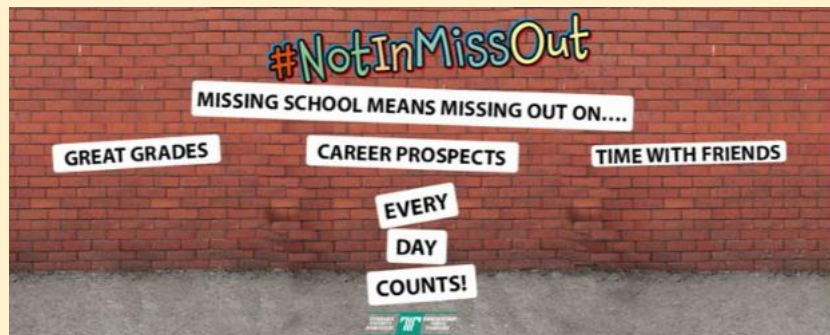


**Attendance Winners 20th - 25<sup>th</sup> April 2026**

Congratulations to Dosbarth 4 Miss Brooks who were foundation phase attendance winners for last week with 93.13% and Dosbarth 7 Mr Phillips for KS2 with 95.86%

**WELL DONE! DA IAWN!**

**This week's attendance figures are**



| Year      | % overall | Class | Percentage | Year  | % overall | Class | Percentage |
|-----------|-----------|-------|------------|-------|-----------|-------|------------|
| Nursery   | 83.4      | 0     | 83.4%      | 3 / 4 | 86.2      | 5     | 86.2%      |
| Reception | 89.8      | 1     | 89.8%      |       |           | 6     | 86.3%      |
|           |           |       |            | 4     | 94.8      | 7     | 94.8%      |
| 1         | 92.2      | 2     | 92.2%      |       |           |       |            |
| 1 / 2     | 87.1      | 3     | 81.8%      | 5 / 6 | 83.7      | 8     | 85.2%      |
|           |           | 4     | 92.5%      |       |           | 9     | 82.3%      |
|           |           |       |            | 5 / 6 | 81.3      | 10    | 82%        |
|           |           |       |            |       |           | 11    | 80.7%      |

| Class | Target by end of year | Current percentage to date |
|-------|-----------------------|----------------------------|
| 3     | 95                    | 90.9%                      |
| 4     | 95                    | 92.9%                      |
| 5     | 95                    | 93%                        |
| 6     | 95                    | 91.7%                      |
| 7     | 95                    | 95.5%                      |
| 8     | 95                    | 88%                        |
| 9     | 95                    | 92.5%                      |
| 10    | 95                    | 93.2%                      |
| 11    | 95                    | 92.4%                      |

### Seren Yr Wythnos

| Foundation Phase                       |                        | Key Stage 2                    |            |
|--|------------------------|--------------------------------|------------|
| Class                                  | Seren Yr Wythnos       | Class                          |            |
| Nursery - Mrs Rogers                   | AM-Kal-El<br>PM-Oakley | Dosbarth 5 - Mr Key            | Isabelle   |
| Dosbarth 1 - Mrs Lewis                 | Emilie                 | Dosbarth 6 - Miss Williams     | Elliot     |
| Dosbarth 2 - Miss Dalton               | Felicity               | Dosbarth 7 - Mr Phillips       | Miyah      |
| Dosbarth 3 - Miss Bones / Mrs Attewell | Aurora                 | Dosbarth 8 - Mrs Ngwenya       | Theo       |
| Dosbarth 4 - Miss Brooks               | Dolcie                 | Dosbarth 9 - Mrs Emanuel       | Chloe      |
|  |                        | Dosbarth 10 - Mrs Lee          | Sawyer     |
|  |                        | Dosbarth 11 - Mrs Parker-Evans | Skylah Rae |

**Meithrin** - The children have enjoyed learning about *The Gruffalo*. They have been thinking of interesting words to describe the characters in the book. We have been discovering lots of interesting things in the outdoor area and explored the forest school looking for the *Gruffalo*. Please could you send in a hat and a water bottle as the weather is hot and the children love to be outside. Have a lovely weekend.

**Dosbarth 1** - Reception / Derbyn have thoroughly enjoyed learning about our new topic, "*yn y goedwig*" (in the forest). The children in Dosbarth Un have loved exploring Forest School and spending time discovering the outdoors. They have also really enjoyed our new class book, *The Gruffalo*, which has sparked lots of fantastic discussions and imagination. Have a lovely extended weekend, and we will see you on Tuesday!



**Dosbarth 2-** Dosbarth 2 have had a great week. We began exploring our new story, *The Little Ladybird*, and enjoyed a lively debate sharing ideas about the front cover. In Mathematics, we focused on missing numbers in sequences and number sentences, using our reasoning skills to find the answers. Da iawn, Dosbarth 2!

**Dosbarth 3** - We have had another fantastic week of learning in Dosbarth Tri, we have enjoyed making predictions about our class book and sharing our new topic ideas. We have also enjoyed spending lots of time outside in the beautiful weather. Just a reminder in the warm weather, can children please bring in hats and have suncream applied before school. Thank you for your continued support, have a lovely weekend!

**Dosbarth 4** -

What a fantastic week we have had in class! This week we have been learning about Buddhism and how they celebrate. We have enjoyed planting outside and picking our vegetables to plant and ensured they would have enough water and sunlight to grow.

In maths this week we have been looking at missing numbers and how we can find these using a number square and number line. Have a lovely weekend.

**Dosbarth 5** - Da iawn class 5 for a wonderful start to our new topic, 'Healthy Heroes Unite'. We have begun sharing our topic ideas about different sports and athletes that we are interested in, and how we keep ourselves healthy. The children particularly enjoyed our topic day where they explored the effects of exercise on our body.

**Dosbarth 6 & 7** - Da iawn for another fantastic week. We have been thoroughly enjoying exploring our new topic 'Healthy Heroes Unite'. The children particularly enjoyed our topic day where they explored the effects of exercise on our heart rate. Have a lovely weekend everyone!

**Dosbarth 8, 9 & 10** - We had an amazing time last week on the Year 5 residential - the children behaved impeccably and there were many comments from the staff about their politeness. we were very proud! massive thank you to everyone who has supported us with our year 6 fundraising, we are very grateful. Have a wonderful weekend!

**Dosbarth 11** - What incredible work this week! You have flourished with the new topic and continue to sparkle with your fund raising! Keep up the wonderful work and enjoy making a start on the new learning log.

## Community Notices



No need to book, just turn up!

# Hyfforddiant Toiled

Dydd Llun 18 Mai, 9:30 -10:30

# Toilet Training

Monday 18 May, 9:30 -10:30

Blaenavon Integrated Children's Centre  
Middle Coed Cae, Blaenavon, NP4 9AW

Addas ar gyfer gofalwyr plant dros 15 mis oed  
Suitable for carers of children over 15 months of age



Croeso

Bore da

Hwyl

# PONTYPWL

DYDD MERCHER / WEDNESDAY

# 13:00 - 14:00

29/04/26 - 24/06/26

Cylch Meithrin Pontypwl, St James Hall,  
St James Field, Handbury Road,  
Pontypool, NP4 6JT

Clwb Cwtsh is a fun-filled and informal programme focusing on speaking Welsh with young children.  
Mae Clwb Cwtsh yn gwrs blasu Cymraeg sydd wedi'i anelu at ddysgwyr newydd ac sy'n canolbwyntio ar iaith magu plant yn y cartref.

I gofrestru, epostiwch / To register, email:  
[clwbcwtsh@meithrin.cymru](mailto:clwbcwtsh@meithrin.cymru)





# NEW PLAYERS WANTED

**Kids Rugby – Come & Give It a Try!**  
Looking for a fun, active sport for your child?

Our Mini & Junior Rugby Team is welcoming new players of all abilities.

Fun, safe & supportive environment.  
Build confidence, teamwork & friendships  
Open to all kids who want to give rugby a try

Bring your child along on a Wednesday training night for a free taster session to see if rugby is for them — no pressure, just fun!

Location: Lasgarn View, Varteg, Pontypool  
Torfaen  
NP4 7SF



Message us on Facebook  
@Garndiffaith Mini and Juniors

# ● WEEKLY ACTIVITIES IN ● GARNDIFFAITH AND ABERSYCHAN

## MONDAY

**10 am - 11am**

Yoga - Cwmavon Village Hall  
Baby & Me - Millenium Hall

**10 am - Midday**

Drawing & Talking - Coedwedd  
Community Hub

**12.30 - 2.30pm**

Open art session - Coedwedd  
Community Hub

**1pm - 3pm**

Wellbeing Through Stitch -  
Cwmavon Village Hall

## TUESDAY

**10 am - 11am**

Couch to 5km - Coedwedd  
Community Hub

**10 am - Midday**

Coffee Morning - Trinity  
Methodist Church

**10.30am - 11am**

Tai Chi Talywain OAP Hall

**11.30am - 12.30pm**

Body Weight Exercise Class -  
Millenium Hall

**Midday - 2pm**

Lunch club - Talywain Rugby  
Club

**2.30pm - 4.30pm**

Pensioners Club - Victoria  
Village Hall

## WEDNESDAY

**10 am - 11am**

Tai Chi - Millenium Hall

**10am - 2.30pm**

Men's shed - Coedwedd  
Community Hub

**2pm - 4pm**

Prize Bingo - Victoria Village  
Hall

Cwmavon & Blaenavon  
Crafters - Cwmavon Village  
Hall

**6pm - 8pm**

Noddfa Teens - Noddfa  
Church

**8pm - 10pm**

Old Time Modern Dancing -  
Millenium Hall

## FRIDAY

**9.30 - 10.30am**

Pop in & Play (family with pre-  
school children) - Millenium  
Hall

**10am - 11am**

Tai Chi - Cwmavon Village Hall

**10am - Midday**

Feet-Up Friday - Noddfa  
Church

**10am - 2.30pm**

Fun & Games - Coedwedd  
Community Hub

**6pm - 8pm**

Noddfa Juniors - Noddfa  
Church



The Millennium Hall are running 3 warm hubs on a weekly basis for the next few months.

Monday: 11am - 2pm will be just a warm hub (free refreshments and somewhere to go and have a chat)

Wednesday: 1pm - 4pm will be a film club (free to attend)

Saturday: 11am - 2pm will be a family film club (free to attend)

Victoria Village Hall:

Thursday: Cake and Company 11am - 1pm (free refreshments)

## Coedwedd Community Hub

Coedwedd Community Hub offer sessions in our local community for adults, including DIY, Chat and Snack and Craft and Relax. Please visit their website to find out more.

[Coedwedd Community Hub | Home | Stanley Road, Gardiffaith, Abersychan, Pontypool](#)



# Coedwedd Community Hub

Wellness in the Workshop  
Wellbeing Walks  
Coffee Mornings  
Social Garden  
Drawing & Talking

“Strangers are just friends we haven't met yet”

“Mae dieithriaid yn ffrindiau nad ydym wedi cwrdd â nhw eto”

info@coedwedd.org

**Coedwedd**  
Community Hub

**MEN'S SHEDS**  
CYMRU

Stanley Road  
Garndiffaith, NP4 7LY  
(opposite Premier shop)

Coedwedd  
Communitu Hub

## Weekly Schedule

LET'S TALK

|                                |   |
|--------------------------------|---|
| <b>Monday</b><br>10am - 3pm    | <b>Drawing &amp; Talking</b><br>10am - Midday<br><b>Open House Art</b><br>12:30 - 14:30               |
| <b>Tuesday</b><br>10am - 3pm   | <b>To Be Confirmed</b>  |
| <b>Wednesday</b><br>10am - 3pm | <b>Coffee Morning</b><br>10:00 - Midday<br><b>Men's Shed (Social &amp; Workshop)</b><br>10:00 - 14:30 |
| <b>Thursday</b><br>10am - 3pm  | <b>Social Walk</b><br>10:30 - 13:00   |
| <b>Friday</b><br>10am - 3pm    | <b>Fun &amp; Games</b><br>10am - 14:30  |



**PONTYPOOL!**

**FootiCubs**  
**EARLY YEARS FOOTBALL**

**AGES 18MTHS - 5YRS**

BASED INDOORS AT  
GARNDIFFAITH HALL,  
NP4 7LT EVERY  
SATURDAY!

**FREE TRIAL!**



[www.footicubs.co.uk/early-years](http://www.footicubs.co.uk/early-years)



Unit 14, Gilchrist  
Thomas  
Industrial Estate,  
Blaenavon. NP4  
9RL

GARNSYCHAN PARTNERSHIP

# Community Hub

Monday - Friday 9am - 4:30pm

- Coffee Corner
- FREE WIFI and Computer Library
- Community Kitchen
- Pantry
- FoodBank
- BabyBank
- Fuel Support
- Prescription and Welfare Support Packages
- Befriending Calls
- Volunteering
- Training Courses
- Bike Recycling
- Furniture Retail Shop

 01495 774453

kindest Regards,

Mrs Roche & all the staff at Garnteg Primary School